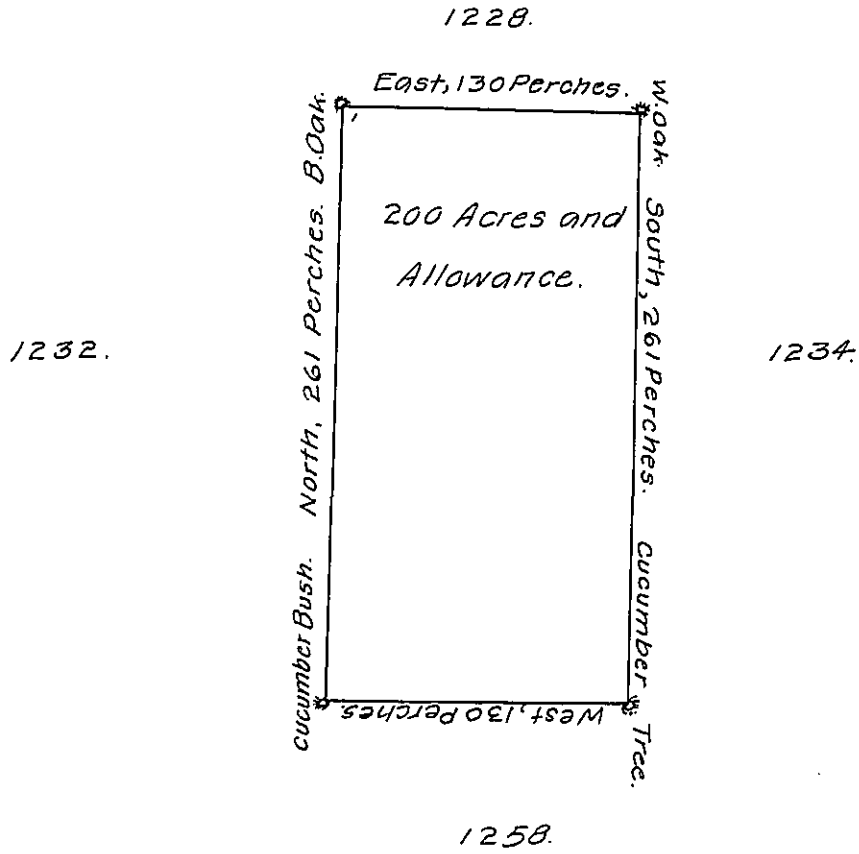


Donation-Land, in District No 6  
 Lot, No MCCXXXIII.



In Pursuance of an Act of General Assembly of the State of Pennsyl-  
 vania, passed the twenty-fourth Day of February 1785, intitled, 'An Act  
 for directing the Mode of distributing the Donation-Lands promised to  
 the Troops by this Commonwealth,' and by Order of the Surveyor-General  
 with the Approbation of the Honourable the Executive-Council, I have  
 surveyed, on the Twenty fifth Day of November 1785, the above describ-  
 ed Tract of Two hundred Acres of Land, and Allowance of Six per Cent  
 for Roads, &c. No. 1233 situate in District No. 6, on the West Side of the  
 Allegheny River, in the County of Westmoreland.

John Lukens, Esq.,  
 Surveyor-General.

Ja: Chrystie Deputy Surveyor.

IN TESTIMONY that the above is a copy of the original remaining on file in  
 the Department of Internal Affairs of Pennsylvania, made  
 conformably to an Act of Assembly approved the 16th day of  
 February, 1833, I have hereunto set my Hand and caused  
 the Seal of said Department to be affixed at Harrisburg,  
 this twenty ninth day of July, 1908.

*Nearmy Aouch*  
 Secretary of Internal Affairs.